

## **VacuTEC**

### Standard Vacuum Plasma Systems



**Head Office**

Tantec A/S  
Industrivej 6  
DK-6640 Lunderskov  
(+45) 7558 5822

**USA:**

(+1) 630-351-1320

**Mail:**

[sales@tantec.com](mailto:sales@tantec.com)

**Web:**

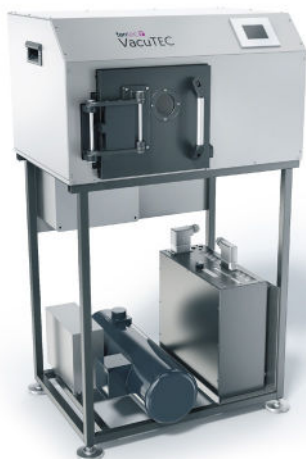
[www.tantec.com](http://www.tantec.com)

**Standard VacuTEC system with customized chamber sizes. There are so many possibilities. Tantec has both standard VacuTEC machines, but also custom-designed machines. The VacuTEC customized machines are specially developed and adapted 100% to customer wishes and requirements in relation to the production line.**

Tantec's VacuTEC Series Plasma Treater is designed for treatment of a large number of different injection moulded parts. The VacuTEC offers very fast treatment times and optimum adhesion properties for downstream coating, gluing, painting and printing applications. In the treating chamber a vacuum is built up to between 0,1 and 3 mbar before an electrical discharge is created through the integrated plasma electrode.

Treatment cycle times are often short, between 5 - 60 seconds depending on the material and its formulation. VacuTEC uses the advanced Tantec power generator HV-X series as power supply and specially designed plasma transformer to provide voltage to the plasma electrodes.

# VacuTEC - Standard Series



Technical Specifications	VacuTEC 2020
Output voltage/plasma power	5kV / 250W
Power source	HV-X10 generator
Compressed air inlet	3 bar dry & clean
Treatment gas	Standard air, (option oxygen, argon, nitrogen on request)
Vacuum pump capacity	50 m <sup>3</sup> /hour (recommended) others on request
Vacuum level	0,1 – 3 mbar
Evacuation time, typical	From 20 sec.
Plasma treatment time, typical	From 20 seconds, depending on material
Electrical Controls	Tantec HMI touch panel.
Regulation compliance	CE - RoHS - WEEE
Chamber volume	24 Liter
Treating volume	4,2 Liter
Tray size	200 x 200 x 105 mm
Shelves	1
Pump placement	Standard behind
Dimensions (W x D x H VacuTEC only)	750 x 506 x 432 mm
Dimensions (W x D x H VacuTEC with frame)	750 x 506 x 1473 mm
Weight	80 kg



Technical Specifications	VacuTEC 5050
Output voltage/plasma power	5kV / 800W
Power source	HV-X10 generator
Compressed air inlet	6 bar dry & clean
Treatment gas	Standard air, (option oxygen, argon, nitrogen on request)
Vacuum pump capacity	100 m <sup>3</sup> /hour (recommended) others on request
Vacuum level	0,1 – 3 mbar
Evacuation time, typical	From 30 sec, depending on pump.
Plasma treatment time, typical	from 20 seconds, depending on material
Electrical Controls	Tantec HMI touch panel.
Regulation compliance	CE - RoHS - WEEE
Chamber volume	260 Liter.
Treating volume	2 x 25 Liter
Tray size	500 x 500 x 100 mm
Shelves	2
Pump placement	Standard behind, (option on top of VacuTEC)
Dimensions (W x D x H)	1070 x 1144 x 1867 mm

# VacuTEC - Standard Series



Technical Specifications	VacuTEC 8080
Output voltage/plasma power	5kV / 1200W
Power source	HV-X20 generator
Compressed air inlet	6 bar dry & clean
Treatment gas	Standard air, (option oxygen, argon, nitrogen on request)
Vacuum pump capacity	300 m <sup>3</sup> /hour (recommended), others on request.
Vacuum level	0,1 – 3 mbar
Evacuation time, typical	From 40 sec, depending on pump.
Plasma treatment time, typical	From 20 seconds, depending on material
Electrical Controls	Tantec HMI touch panel.
Regulation compliance	CE - RoHS - WEEE
Chamber volume	624 Liter
Treating volume	2 x 128 Liter
Tray size	800 x 800 x 200 mm
Shelves	2
Pump placement	Standard behind, (option on top of VacuTEC)
Dimensions (W x D x H)	1450 x 1511 x 2080 mm



Technical Specifications	VacuTEC 100100
Output voltage/plasma power	5kV / 2000W
Power source	HV-X20 generator
Compressed air inlet	6 bar dry & clean
Treatment gas	Standard air, (option oxygen, argon, nitrogen on request)
Vacuum pump capacity	2 x 300 m <sup>3</sup> /hour (recommended), others on request.
Vacuum level	0,1 – 3 mbar
Evacuation time, typical	From 40 sec, depending on pump.
Plasma treatment time, typical	From 20 seconds, depending on material
Electrical Controls	Tantec HMI touch panel.
Regulation compliance	CE - RoHS - WEEE
Chamber volume	1425 Liter
Treating volume	2 x 250 Liter
Tray size	1000 x 1000 x 250 mm
Shelves (teleskop)	2
Pump placement	Standard behind, (option on top of VacuTEC)
Dimensions (W x D x H)	1990 x 1700 x 2065 mm

## RotoVAC - Standard HT60



Technical Specifications	RotoVAC HT 60
Treatment of	Graphene, small parts etc.
Output voltage/plasma power	5kV / 1000W
Power source	HV-X10 generator
Compressed air inlet	6 bar dry & clean
Treatment gas	Standard air, (option oxygen, argon, nitrogen on request)
Vacuum pump capacity	50 m <sup>3</sup> /hour (recommended) others on request
Vacuum level	0,1 – 3 mbar
Evacuation time, typical	From 30 sec.
Plasma treatment time, typical	From 20 seconds, depending on material
Electrical Controls	Tantec HMI touch panel.
Regulation compliance	CE - RoHS - WEEE
Chamber volume	52 Liter
Treating volume	6,2 Liter, depending on material
Barrel volume	25 Liter
Pump placement	Standard inside, (option behind the VacuTEC)
Dimensions (W x D x H)	750 x 945 x 1900 mm

## VacuTEC - Customized machines



Customized solutions developed by Tantec's manufacturing team meet our customers specification and production needs. Footprint, cycle times, chamber size, number of parts per cycle, and interface to name some of the many things that can be customized to fit your needs.